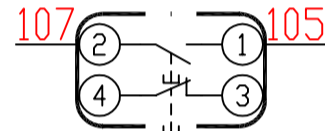
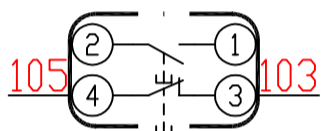
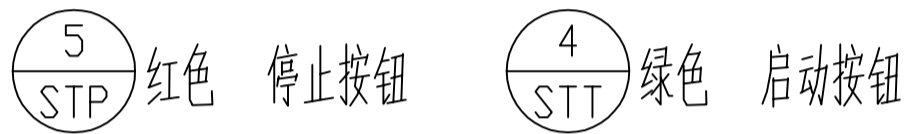
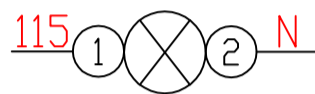
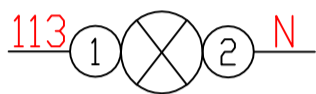
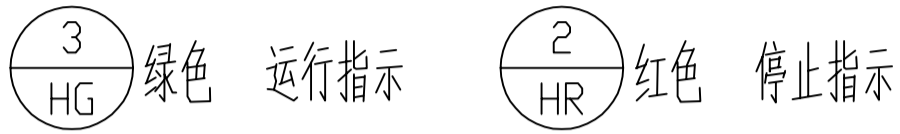
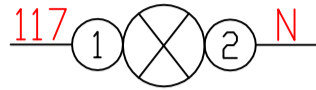
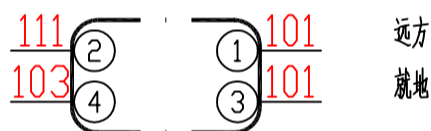


面板背视



转换开关接点

	就地	远方
1-2		×
3-4	×	
5-6		×
7-8	×	



I		
1	101	
2		
3	105	
4		
5	107	
6	111	
7	113	
8	115	
9	117	
10	N	
11		
12		N
13		
14		
15		

柜内如多回路，需在线号前加“1-;2-”

N 至零排，零线也需区分，线号前加“1-N,2-N”

				C2 按钮箱接线图	
设计		日期			
审核		日期			
日期	2025.01	图号			

由 Autodesk 教育版产品制作